



GAT MONTHLY MEMBERSHIP PROGRESS REPORT

Results as of: 3/31/2022

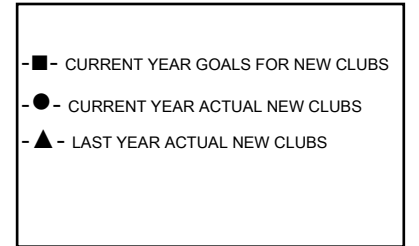
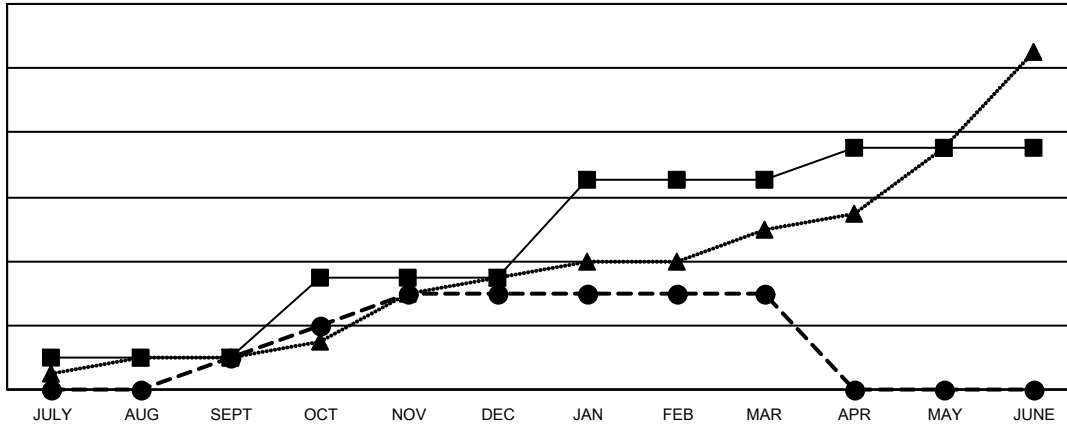
Multiple District A

LOCATION: ONTARIO

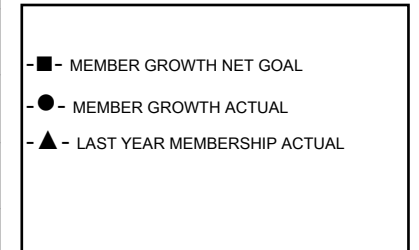
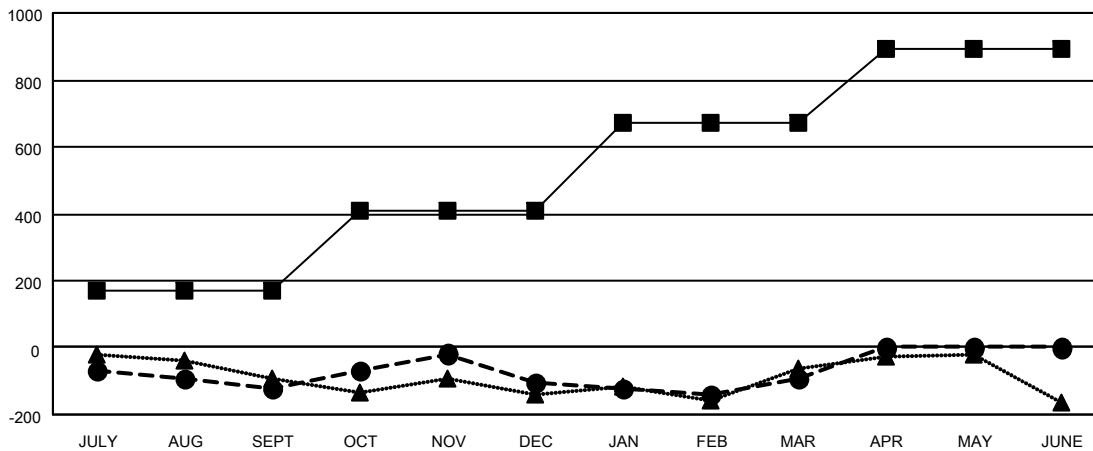
| Clubs | | | |
|-----------------------|---------------|-----------|---------------|
| RESULTS FOR 2021-2022 | | | |
| QUARTER | NEW CLUB GOAL | NEW CLUBS | DROPPED CLUBS |
| JULY/AUG/SEPT | 2 | 2 | 3 |
| OCT/NOV/DEC | 5 | 4 | 2 |
| JAN/FEB/MAR | 6 | 0 | 3 |
| APR/MAY/JUNE | 2 | 0 | 0 |

| Members | | | |
|-----------------------|------------------------|----------------------|--|
| RESULTS FOR 2021-2022 | | | |
| QUARTER | MEMBER GROWTH NET GOAL | MEMBER GROWTH ACTUAL | DROPPED MEMBERS ACTUAL (including transfers) |
| JULY/AUG/SEPT | 170 | 256 | 333 |
| OCT/NOV/DEC | 240 | 484 | 421 |
| JAN/FEB/MAR | 260 | 331 | 275 |
| APR/MAY/JUNE | 225 | 0 | 0 |

GOALS AND ACTUAL NEW CLUBS CUMULATIVE



GOALS AND ACTUAL MEMBERS CUMULATIVE



| | | |
|-------------------------|--|--|
| DROPPED CLUBS: 8 | 244 CLUBS OF 539 ADDED 1 OR MORE NEW MEMBERS | GENDER DISTRIBUTION MALE 8,107 (66.21%) FEMALE 4,136 (33.78%) NON BINARY 0 (0.00%) PREFER NOT TO ANSWER 1 (0.01%) |
| | DROPPED MEMBERS DECEASED 159 CLUB CANCELLED 38 OTHER 832 TOTAL 1,029 | |

[CLICK HERE FOR CUMULATIVE MEMBERSHIP DATA](#)